

michael miller FABRICS

PRINCE CHARMING *Quilt*

Size: 56" W x 56" H | Designed by: Heidi Pridemore | Level: Advanced Beginner



FREE PATTERN AVAILABLE ON MICHAELMILLERFABRICS.COM

FABRIC REQUIREMENTS



CX7721 AQUA
YOUR PAD OR MINE
3-1/2 YARDS



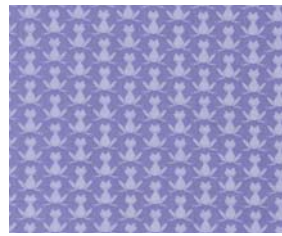
CX7722-AQUA
UNFROGETTABLE
1/2 YARD



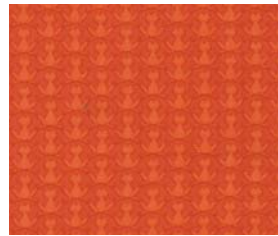
CX7722-CROCUS
UNFROGETTABLE
1/2 YARD



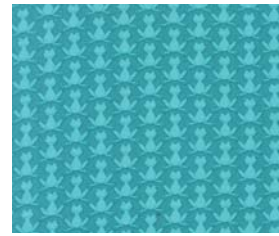
CX7725 BLOOM*
RIBBIT, RIBBIT
2/3 YARD



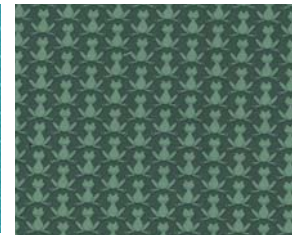
CX7725 LILAC
RIBBIT, RIBBIT
1/4 YARD



CX7725 SUNKIST
RIBBIT, RIBBIT
1/8 YARD



CX7725-STREAM
RIBBIT, RIBBIT
3/8 YARD



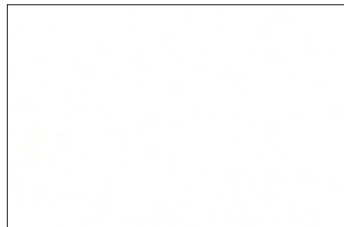
CX7725 LILYPAD
RIBBIT, RIBBIT
1/4 YARD



CX7723 FLOWER
LILY POND GARDEN
1/3 YARD



CX7724 AQUA
POND FRONDS
1/8 YARD



SC5333 BRIGHT WHITE
COTTON COUTURE
1/4 YARD



CX7722 AQUA
UNFROGETTABLE
3-3/4 YARDS (BACKING)

FABRIC REQUIREMENTS

SKU	YARDAGE PER ONE QUILT	# OF BOLTS FOR 12 KITS	# OF BOLTS FOR 24 KITS
(A) CX7721-AQUA	3-1/2 YARDS	3 BOLTS (42 YARDS)	6 BOLTS (84 YARDS)
(B) CX7722-AQUA	1/2 YARD	1 BOLT (6 YARDS)	1 BOLT (12 YARDS)
(C) CX7722-CROCUS	1/2 YARD	1 BOLT (6 YARDS)	1 BOLT (12 YARDS)
(D) CX7725-STREAM	3/8 YARD	1 BOLT (4-1/2 YARDS)	1 BOLT (9 YARDS)
(E) CX7725-LILYPAD	1/4 YARD	1 BOLT (3 YARDS)	1 BOLT (6 YARDS)
(F) CX7725-BLOOM*	2/3 YARD	1 BOLT (8 YARDS)	2 BOLTS (16 YARDS)
(G) CX7725-LILAC	1/4 YARD	1 BOLT (3 YARDS)	1 BOLT (6 YARDS)
(H) CX7723-FLOWER	1/3 YARD	1 BOLT (4 YARDS)	1 BOLT (8 YARDS)
(I) CX7724-AQUA	1/8 YARD	1 BOLT (1-1/2 YARDS)	1 BOLT (3 YARDS)
(J) CX7725-SUNKIST	1/8 YARD	1 BOLT (1-1/2 YARDS)	1 BOLT (3 YARDS)
(K) SC5333-BRIGHT WHITE	1/4 YARD	1 BOLT (3 YARDS)	1 BOLT (6 YARDS)
(BACKING) CX7722-AQUA	3-3/4 YARDS	3 BOLTS (45 YARDS)	6 BOLTS (90 YARDS)
TOTAL BOLTS NEEDED		16 BOLTS (13 W/O BACK)	23 BOLTS (17 W/O BACK)

*INCLUDING BINDING

"Prince Charming"

Quilt by Heidi Pridemore

Size: Approximately 56" x 56" Skill Level: Intermediate

Materials

Cutting instructions

Please Note: All strips are cut across the width of fabric (WOF) from selvage to selvage edge unless otherwise noted.

	Fabric	Yardage	Cutting
(A)	CX7721-Aqua Your Pad or Mine – Aqua	3 ½ yards	<ul style="list-style-type: none"> • Cut six 8 ½" x WOF strips. Sew the strips together end to end with diagonal seams and sub-cut four 8 ½" x 60" strips with the frogs at the bottom. • From the remaining fabric cut two 5 ⅞" x WOF strips. Sub-cut the strips into nine 5 ⅞" squares. Cut each square across one diagonal to make eighteen large triangles.
(B)	CX7722-Aqua Unfrogettable – Aqua	½ yard	<ul style="list-style-type: none"> • Cut one 13 ¼" x WOF strip. Sub-cut the strip into one 13 ¼" square, two 9" squares and one 6 ⅞" square. Cut the 13 ¼" square across both diagonals to make four large triangles. Cut the 6 ⅞" square across one diagonal to make two triangles.
(C)	CX7722-Crocus Unfrogettable – Crocus	½ yard	<ul style="list-style-type: none"> • Cut one 13 ¼" x WOF strip. Sub-cut the strip into one 13 ¼" square, two 9" squares and one 6 ⅞" square. Cut the 13 ¼" square across both diagonals to make four large triangles. Cut the 6 ⅞" square across one diagonal to make two triangles.
(D)	CX7725-Stream Ribbit Ribbit – Stream	⅜ yard	<ul style="list-style-type: none"> • Cut two 5 ⅞" x WOF strips. Sub-cut the strips into nine 5 ⅞" squares. Cut each 5 ⅞" square across one diagonal to make eighteen large triangles.
(E)	CX7725-Lilypad Ribbit Ribbit – Lily Pad	¼ yard	<ul style="list-style-type: none"> • Cut one 3 ⅞" x WOF strip. Sub-cut the strip into nine 3 ⅞" squares. Cut each 3 ⅞" square across one diagonal to make eighteen medium triangles.
(F)	CX7725-Bloom Ribbit Ribbit – Bloom	⅔ yard	<ul style="list-style-type: none"> • Cut one 3 ⅞" x WOF strip. Sub-cut the strip into nine 3 ⅞" squares. Cut each 3 ⅞" square across one diagonal to make eighteen medium triangles. • Cut six 2 ½" x WOF strips for the binding.
(G)	CX7725-Lilac Ribbit Ribbit – Lilac	¼ yard	<ul style="list-style-type: none"> • Cut one 3" x WOF strip. Sub-cut the strip into nine 3" squares. Cut each 3" square across one diagonal to make eighteen small triangles.
(H)	CX7723-Flower Lily Pond Garden – Flower	⅓ yard	<ul style="list-style-type: none"> • Cut one 3" x WOF strip. Sub-cut the strip into nine 3" squares. Cut each 3" square across one diagonal to make eighteen small triangles. • Cut two 1 ½" x 40 ½" strips. • Cut two 1 ½" x 38 ½" strips.
(I)	CX7724-Aqua Ponds Fronds – Aqua	⅛ yard	<ul style="list-style-type: none"> • Cut one 2" x WOF strip. Sub-cut the strip into eighteen 2" squares.
(J)	CX7725-Sunkist Ribbit Ribbit – Sunkist	⅛ yard	<ul style="list-style-type: none"> • Cut one 2" x WOF strip. Sub-cut the strip into eighteen 2" squares.
(K)	SC5333-Bright White Classic Cotton – Bright White	¼ yard	<ul style="list-style-type: none"> • Cut two 1 ½" x 38 ½" strips. • Cut two 1 ½" x 36 ½" strips.
Backing	CX7722-Aqua Unfrogettable - Aqua	3 ¾ yards	<ul style="list-style-type: none"> • Cut two 64" x WOF strips. Piece the strips together and trim to make the 64" x 64" pieced backing.

You will also need:

- 64" x 64" batting, threads to match, scissors, straight pins, acrylic ruler, rotary cutter and mat.

Disclaimers

This pattern is provided as a courtesy to quilt stores, catalogs and quilters. Michael Miller Fabrics, LLC is not responsible for the accuracy of any kits packaged to accompany this pattern. Please direct any inquiries to the kit maker.

Yardage requirements for this pattern may allow for excess yardage to accommodate specific placement of motifs or to allow for any fussy-cutting to achieve the finished quilt design.

While every attempt has been made to give accurate measurements, yardage requirements and construction directions; this does not allow personal variations in measuring, cutting or sewing. The enclosed directions were used in the construction of the original quilt.

Block Assembly

1. Sew one 2" Fabric J square to the left side of one 2" Fabric I square to make one JI strip. Sew one 2" Fabric I square to the left side of one 2" Fabric J square to make one IJ strip. Sew the JI strip to the top of the IJ strip to make one Unit 1 square (Fig. 1). Repeat to make nine Unit 1 squares total.
2. Sew one Fabric G small triangle to each side of one Unit 1 square. Sew one Fabric H small triangle to the top and to the bottom of the Unit 1 square to make one Unit 2 square (Fig. 2). Trim Unit 2 square to measure $4\frac{3}{4}" \times 4\frac{3}{4}"$. Repeat to make nine Unit 2 squares total.
3. Sew one Fabric E medium triangle to each side of one Unit 2 square. Sew one Fabric F medium triangle to the top and to the bottom of the Unit 2 square to make one Unit 3 square (Fig. 3). Trim Unit 2 square to measure $6\frac{1}{2}" \times 6\frac{1}{2}"$. Repeat to make nine Unit 3 squares total.
4. Sew one Fabric A large triangle to each side of one Unit 3 square. Sew one Fabric D large triangle to the top and to the bottom of the Unit 3 square to make one Block One (Fig. 4). Trim the block to measure $9" \times 9"$. Repeat to make nine Block Ones total.

Unit 1
make 9

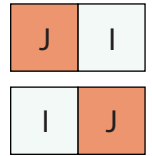


Fig. 1

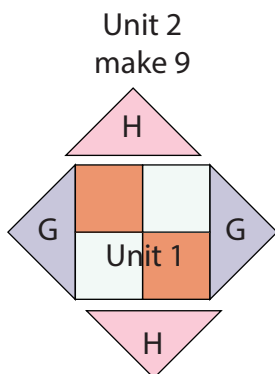


Fig. 2

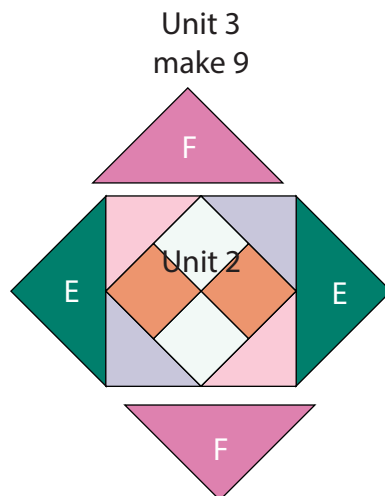


Fig. 3

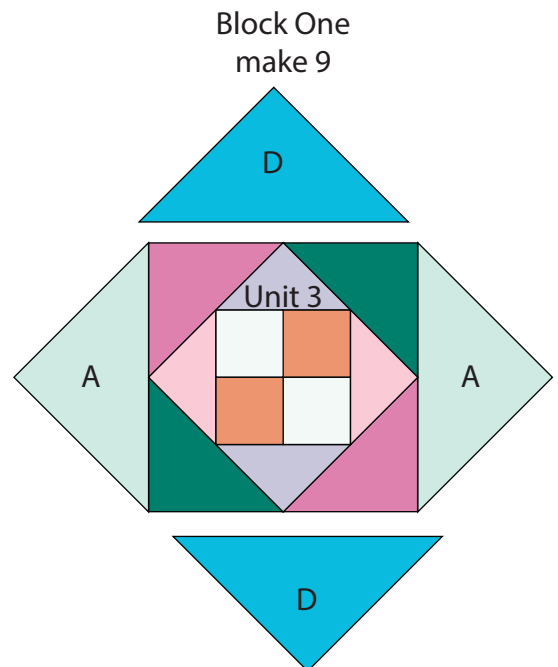


Fig. 4

Quilt Top Assembly

(Follow the Quilt Layout while assembling the quilt top.)

5. Refer to Figure 5 for block and fabric placements to make the rows. Pay attention to the orientation of the Block Ones. Sew the rows together to make the Center Block.

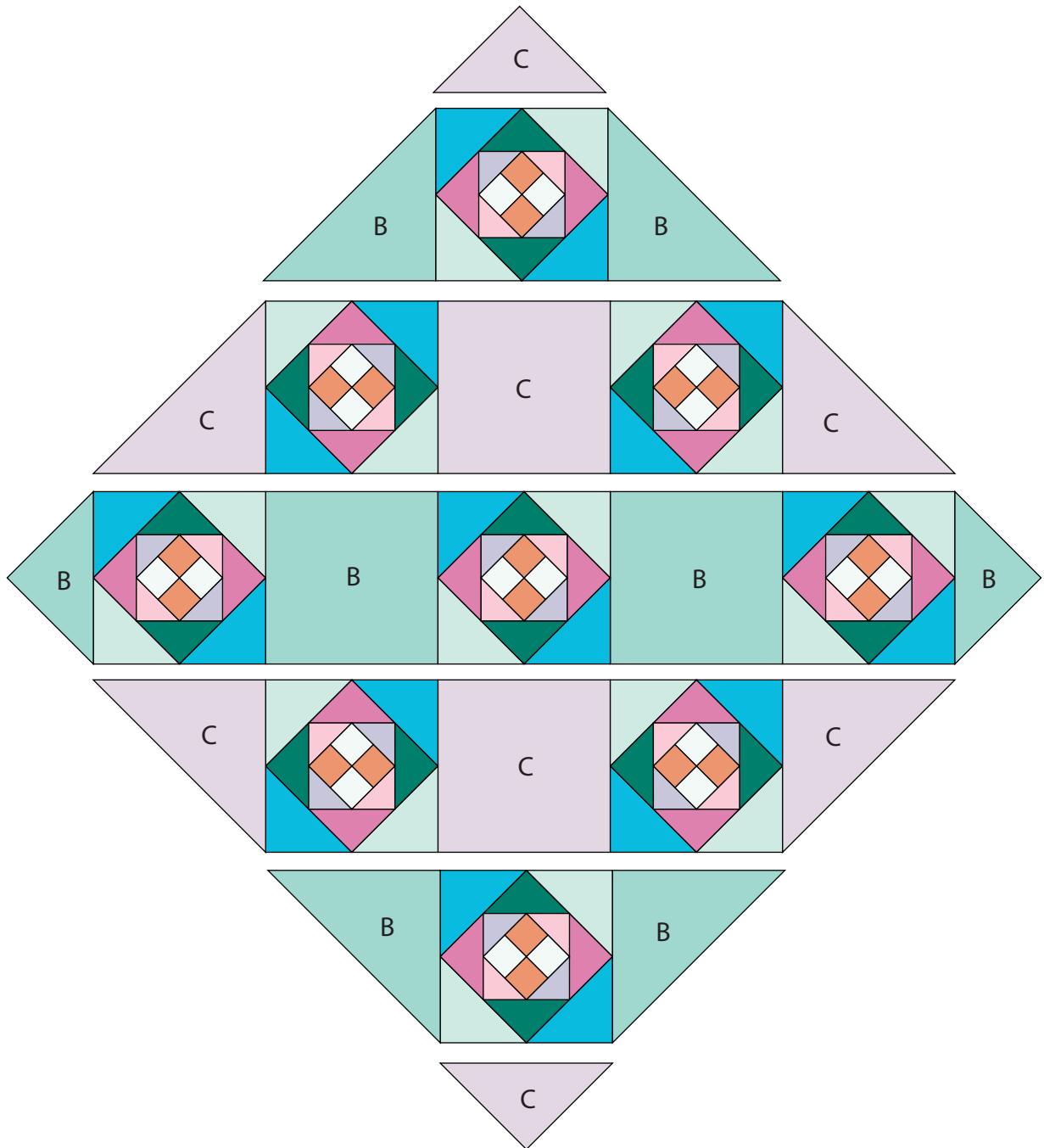


Fig. 5

6. Sew one $1\frac{1}{2}$ " x $36\frac{1}{2}$ " Fabric K strip to each side of the Center Block. Sew one $1\frac{1}{2}$ " x $38\frac{1}{2}$ " Fabric K strip to the top and to the bottom of the Center Block.
7. Sew one $1\frac{1}{2}$ " x $38\frac{1}{2}$ " Fabric H strip to each side of the Center Block. Sew one $1\frac{1}{2}$ " x $40\frac{1}{2}$ " Fabric H strip to the top and to the bottom of the Center Block.
8. Center one $8\frac{1}{2}$ " x 60" Fabric A strip on one side of the Center Block and pin in place. Start sewing the strip a $\frac{1}{4}$ " from the top edge of the block and stop a $\frac{1}{4}$ " from the bottom edge. **DO NOT TRIM THE EXCESS.** Repeat with the opposite side.

9. Repeat Step 8 to sew one 8 1/2" x 60" strip to the top and to the bottom of the Center Block, making sure to stop and start 1/4" away from each end of the block. To miter each corner, fold the Center Block on a diagonal, wrong side together. This should line up the strips from adjacent sides (Fig. 6).
10. Starting at the sewn seam (represented by the arrow in Figure 6), draw a 45-degree line to the edge of the fabric. Sew on the drawn line. Trim the excess fabric leaving a 1/4" seam. Repeat this step with the remaining corners to make the quilt top.
11. Layer and quilt as desired.
12. Sew the six 2 1/2" x WOF Fabric F strips together, end-to-end with 45-degree seams, to make the binding. Fold this long strip in half lengthwise with wrong sides together and press.
13. Bind as desired.

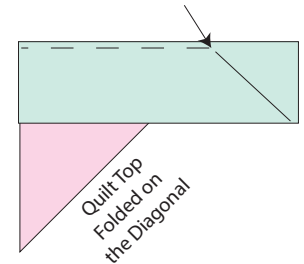
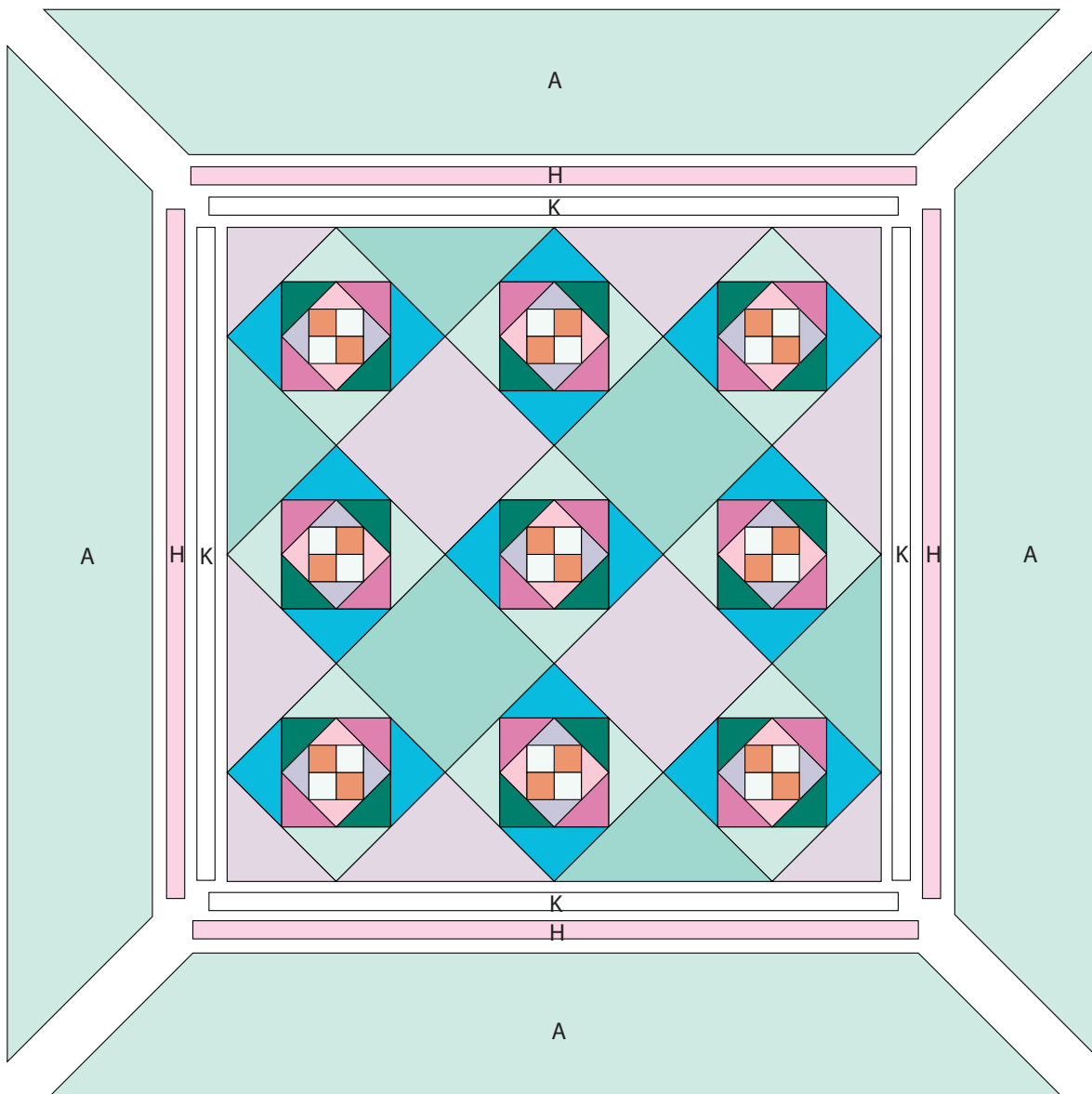


Fig. 6



Quilt Layout