

# Infinity Quilt



# Infinity Quilt

## Fabric Requirements

Completed Quilt: 48" x 72"



DC7753 Cloud 1/3 yard  
DAISY PAISLEY



DC7754 Coral 1/3 yard  
LACEY DAISY



DC7756 Cloud 1/3 yard  
PETAL PATTERN



DC7753 Teal 1/3 yard  
DAISY PAISLEY



DC7754 Sky 1/3 yard  
LACEY DAISY



DC7756 Sky 1/3 yard  
PETAL PATTERN



DC7757 Cloud 1/3 yard  
SWEET DAISY LANE



DC7757 Sky 1/3 yard  
SWEET DAISY LANE



DC7757 Teal 1/3 yard  
SWEET DAISY LANE



DC7757 Coral 1/3 yard  
SWEET DAISY LANE



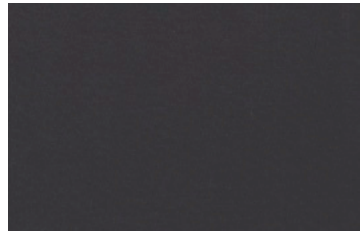
DC7757 Gold 1/3 yard  
SWEET DAISY LANE



DC7757 Marigold 1/3 yard  
SWEET DAISY LANE



SC5333 Clementine 1/4 yard  
COTTON COUTURE



SC5333 Metal 1/4 yard  
COTTON COUTURE



SC5333 Bright White 2 yards  
COTTON COUTURE



**BACKING FABRIC:**  
SC5333 Fog 3 yards  
COTTON COUTURE



**BINDING FABRIC:**  
DC7757 Marigold 1/2 yard  
SWEET DAISY LANE

# Infinity Quilt

Finished Quilt Size: 48" x 72" Skill Level: Beginner

## Also Needed:

- 54" x 78" quilt batting.
- A rotary cutter, a long acrylic ruler, cutting mat, thread, scissors, pins, pencil.

## Cutting Instructions:

- Backing Fabric - Cut 1 piece 54" x Width of Fabric (WOF). Cut 1 piece 54" x 35". Set aside for backing.
- Binding fabric - Cut 6 strips 2¼" x WOF. Set aside to bind quilt.
- All patterned fabrics - Cut 2 strips 4½" x WOF of each fabric. Subcut these strips into 14 (4½" squares).
- SC5333 Bright White - Cut 6 strips 4½" x WOF. Subcut 48 (4½" squares).  
- Cut 12 strips 2½" x WOF. Subcut into 192 (2½" squares).  
- Cut 5 strips 2" x WOF. Subcut into 96 (2" squares).
- SC5333 Metal - Cut 3 strips 2" x WOF. Subcut into 48 (2" squares).
- SC5333 Clementine - Cut 3 strips 2" x WOF. Subcut into 48 (2" squares).

## Making the Infinity Block:

All seam allowances are ¼".

Each **Infinity Block** uses:

- seven 4½" patterned squares (of the same pattern)
- two 4½" white squares
- eight 2½" white squares
- four 2" white squares
- two 2" metal squares
- two 2" clementine squares

You will use these squares to make a number of 4 different small blocks (see Fig 1-4 below) that come together to form the Infinity Block.

Each **Infinity Block** uses:

- two Fig 1 blocks (one 4½" white square & one 2" clementine square per block)
- four Fig 2 blocks (one 4½" patterned square, one 2" white square & one 2½" white square per block)
- two Fig 3 blocks (one 4½" patterned square, one 2" metal square & one 2½" white square per block)
- one Fig 4 block (one 4½" patterned square, & two 2½" white squares per block)

Fig 1

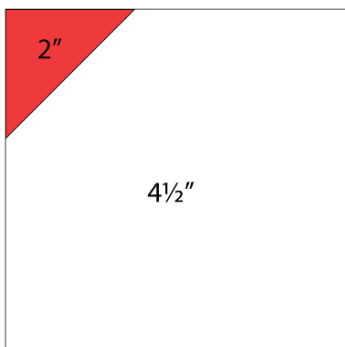


Fig 2

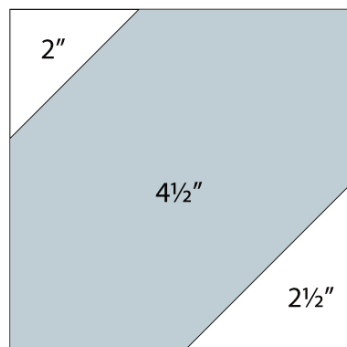


Fig 3

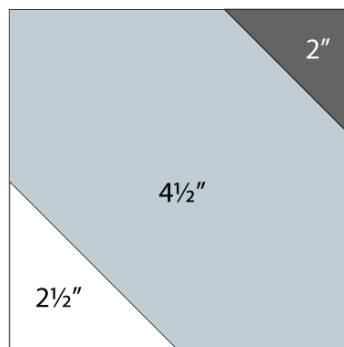
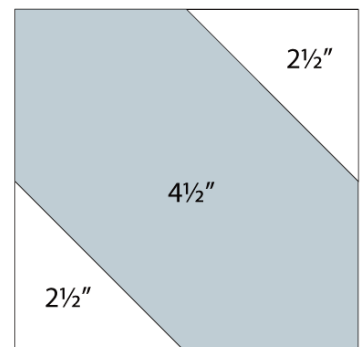


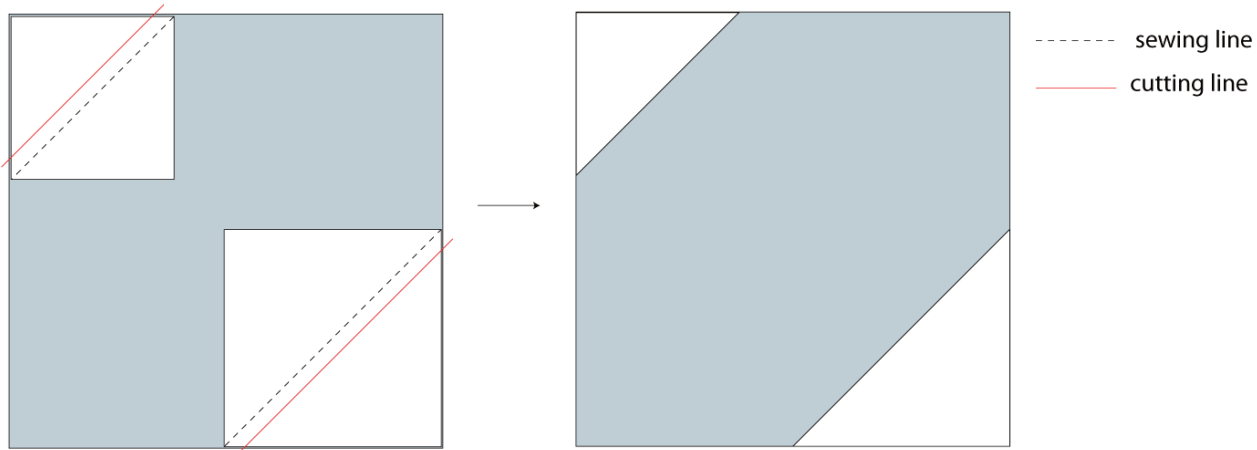
Fig 4



# Infinity Quilt

- Mark a diagonal line, corner to corner on one side of all 2" & 2½" squares.
- As in diagram below, place the appropriate small square Right Sides Together (RST) on its corresponding 4½" square, matching corners. Sew along the drawn line. Cut off excess fabrics ¼" beyond sewing line. Press seams away from white fabric in all cases.

The example below makes a Fig 2 block. Follow this method for all small blocks.



- Lay out the finished small blocks as per **Diagram 1** (Tip: the 2½" triangles come together to form the two white squares in the centre of the block and the 2" triangles stay along the edges).

-Repeat this process for all blocks. The quilt uses two blocks of each of the 12 different patterned fabrics, making 24 blocks.

## Piecing Quilt Top:

Layout the 24 blocks as per the quilt photo (4 blocks across and 6 blocks down), pivoting blocks to create the large white stars with clementine centres. Sew the blocks together, one row at a time. Press seams open. Pin rows together, matching seam lines and corners. sew rows together. Press seams open.

## Assembling Quilt:

Sew together two backing pieces along the long edges. Press seam open.

Layer backing, batting and quilt top. Baste or pin.

Quilt as desired.

Square up quilt top.

Join binding strips together and bind in your preferred fashion.

# Infinity Quilt

Diagram 1

