



2104DAV Overlocker

Ideal for:

- Seams & Hems
- Instant rolled hems
- Decorative effects

- 3 or 4 thread overlocker
- Easy to follow lay-in threading
- Fast and Simple Lower Looper threading system
- Differential feed
- Instant rolled hem
- Bright LED Sewing light

2104DAV Overlocker



4 colour easy threading guide



Pressure control



Free arm / Flat bed convertible sewing surface



LED work light



Easy access controls

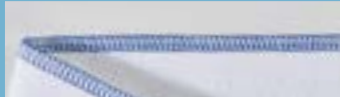


Built-in accessory storage

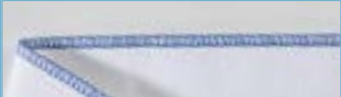
Features at a glance:

- 3 or 4 thread, cut and sew overlock stitches
- Uses standard sewing machine needles
- Fast and Simple Lower Looper threading system
- 4 colour threading guide
- Perfect overlock stitches on all types and weights of fabric
- Stitch width 5.0 - 7.0 mm
- Differential feed for perfect seams on virtually any fabric type, eliminates the wavy or stretched appearance of stitches on fabrics
- Retractable knife
- Free arm / Flat bed
- Bright LED light to illuminate the sewing area
- Thread twist protection and needle plate separation for improved sewing quality
- Lightweight, compact machine with carry handle
- Presser foot pressure adjustment
- Blind Stitch Foot for finishing and hemming in one operation
- Common snap on presser foot
- Tool kit
- Built-in accessory storage
- Dust cover
- Instructional DVD

Standard Stitch Selection



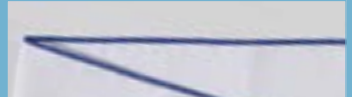
4 Thread Overlock



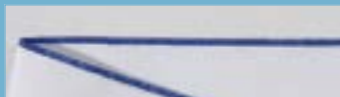
3 Thread Overlock 5 mm



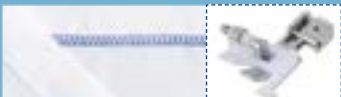
3 Thread Overlock 2.8 mm



Rolled Hemming



Narrow Hemming



Blind Hemming / Blind Stitch Foot



Pin Tucks with Blind Stitch Foot



Flat lock with Blind Stitch Foot



Piping Foot
To attach piping between two layers of fabric.



Gathering Foot
For gathering and sewing in one operation.

Optional Stitch Selection (Optional feet required)



Taping (Elastic) Foot
To attach tapes and elastic to stretch fabrics.



Pearls and Sequins Foot
To attach pearls and Sequins to fabric.

For the full range of accessories available see sewingcraft.brother.eu

BrotherSewingUK   

Contact:



brother
at your side

Brother Sewing Machines Europe GmbH UK Branch
Shepley Street, Audenshaw, Manchester M34 5JD
sewingcraft.brother.eu