

# SEW ALONG

## Stash Buster Quilt

**BLOCK 9**



ECLECTIC MAKER

BLOCK 9: Spool and Bobbin - Finished Size 12" (Unfinished 12-1/2")



This month we are going to make a Spool and Bobbin quilt block. This is a four-patch block that is made from two different units, a plain unit and a unit that is also a quilt block in its own right. This block has many names including Shaded Four Patch, Birds in the Air, Mary's Triangles, Squared Triangles, Hidden Square, Jewel Box (or block) to name but a few. We have made this unit before one at a time by cutting individual squares and triangles but this time we are going to make two at a time using a different method.



ECLECTIC MAKER



[www.eclecticmaker.co.uk](http://www.eclecticmaker.co.uk)

[facebook/eclecticmaker](https://facebook/eclecticmaker)

[@eclecticmaker](https://instagram/eclecticmaker)

## CUTTING

There are a few triangles in this block so take care when pressing not to stretch your fabrics. You will need four, contrasting fabrics for this block, I chose purples and pinks for mine. I'm sure whatever you choose your block will look great.



- A. Four 2-1/4" x 2-1/4" squares (Pink)
- B. Two 5" x 4" rectangles (Purple)
- C. Four 2-1/4" x 2-1/4" squares (Pomegranate)
- D. Two 5" x 4" rectangles (Fuchsia)
- E. Eight 2-1/4" x 3-1/4" rectangles (White)
- F. Eight 3-1/2" x 3-1/2" squares (White)

In this block the background fabrics are E & F.

## BLOCK ASSEMBLY:

- ✂ All seams are 1/4" and I use a stitch length of 1.8.
- ✂ As a rule, you would press your fabric seams towards the dark side (darker fabric). I finger press my seams before pressing with an iron. This allows you to change the seams' direction if needed without stretching your fabrics.
- ✂ In bulky areas press your seams open as this will help reduce thickness.



ECLECTIC MAKER

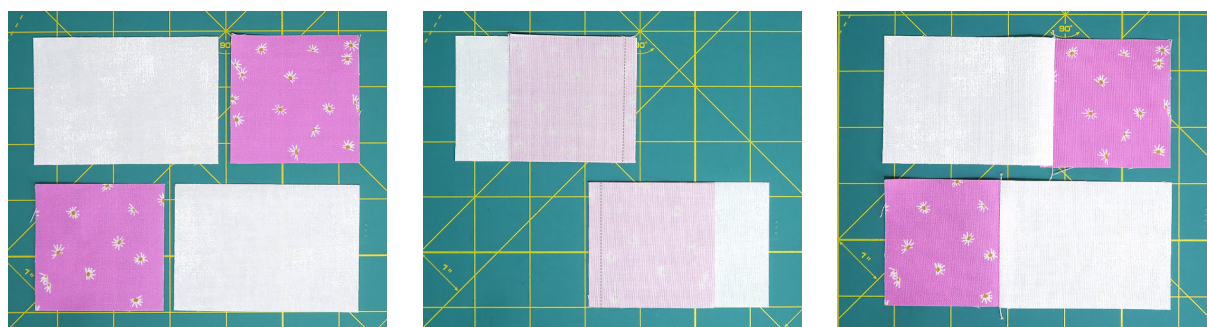


[www.eclecticmaker.co.uk](http://www.eclecticmaker.co.uk)

[facebook/eclecticmaker](https://facebook.com/eclecticmaker)

[@eclecticmaker](https://instagram.com/eclecticmaker)

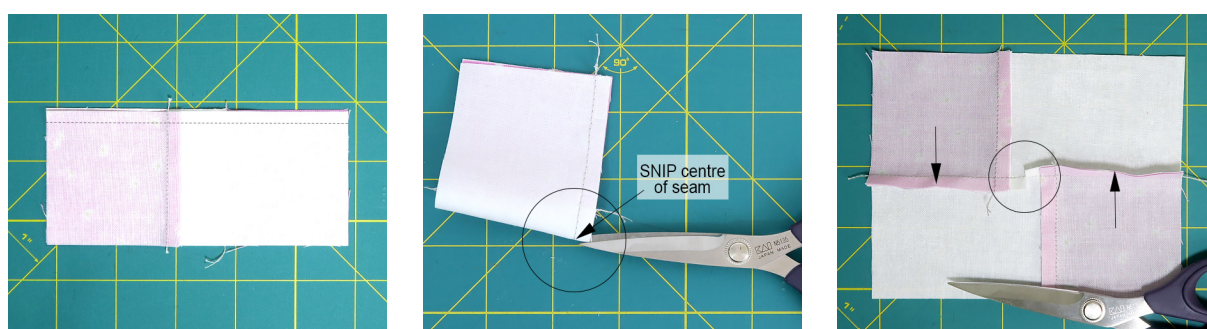
We are going to start by making the top left-hand unit of the quilt block 'Shaded Four Patch'. We are going to make this unit slightly larger and then trim to size, a technique that will be very familiar to you by now.



For the top left-hand unit you will need two 2-1/4" x 2-1/4" square fabrics (A). Two 2-1/4" x 3-1/4" rectangle fabrics (E) and one 5" x 4" fabric (B).

Lay out your fabrics A and E as shown above, this is how we are going to stitch them together. Place your coloured fabric squares on top of your rectangles with right sides together (RST) aligning the top and side edges then stitch down the side of each.

Open out your fabrics and finger press your seam towards the white rectangle, being careful not to stretch your fabrics, then fix with your iron.

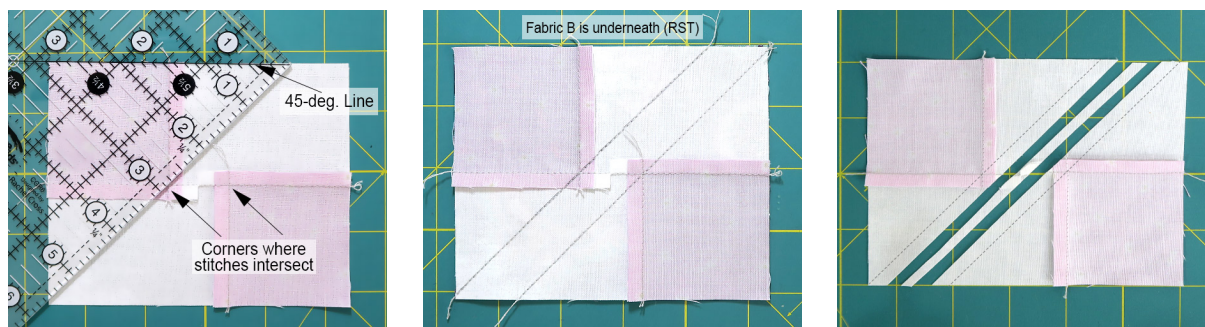


Then stitch these two-pieced rectangles together by placing both with RST, making sure your edges are aligned. Stitch on the longest side.

Now fold the unit in half and carefully snip the fabric seam as close to the stitches as you can without cutting them. This will allow your fabrics to lay in opposite directions when opened out.

Finger press the centre seam towards the white rectangles (see arrows) then fix with an iron.

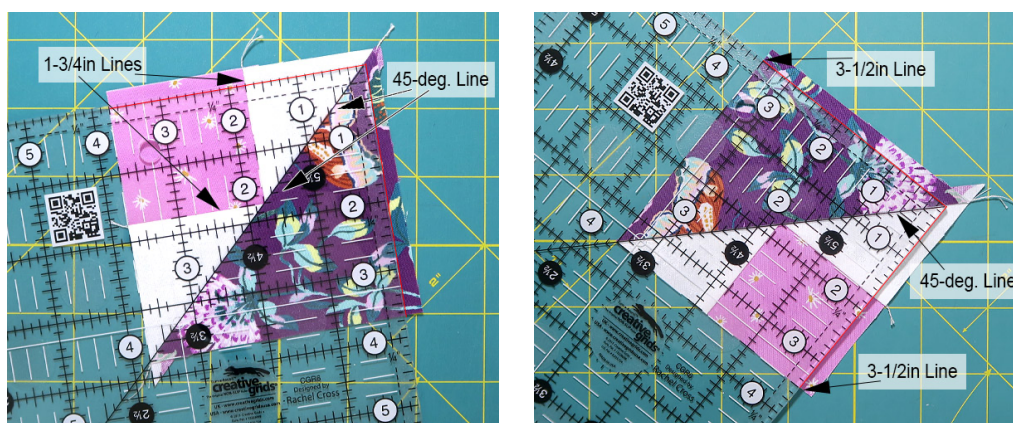




Take your ruler and place its 45-deg. line along the top edge of your unit. Then slide your ruler along the top edge until it intersects with the stitched lines on the small squares (see above) and draw a diagonal line. Turn your unit and repeat on the other side.

Check that your lines match the centre image. Now place this unit RST on top of your large rectangular 5" x 4" fabric (B). Align your edges then stitch on top of both diagonal lines.

Before cutting check that your unit looks like mine. Then trim your diagonal seams 1/4" from both stitched lines; you will have a little bit of fabric left over in the centre. Open out your unit and finger press your seam towards the large triangle, being careful not to stretch your fabric, then fix with an iron.



Now we need to trim our Shaded Four Patch unit down to 3-1/2" square. Place your ruler's 45-deg. line so that it lays along the diagonal centre seam. Then make sure your ruler is lined up against your corner square (fabric A - pink) so that the seam runs along the 1-3/4" line (middle of the unit) vertically and horizontally. Trim the right and top sides.

Next turn your unit around and line up your square so that the ruler left top and bottom sides sit on the 3-1/2" line, you should find that your ruler's 45-deg. line is sitting on your diagonal seam line. Trim away the remaining excess fabrics.



ECLECTIC MAKER

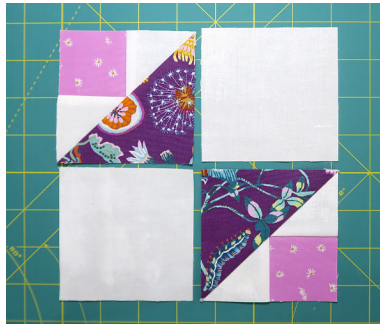


[www.eclecticmaker.co.uk](http://www.eclecticmaker.co.uk)

[facebook/eclecticmaker](https://facebook.com/eclecticmaker)

[@eclecticmaker](https://instagram.com/eclecticmaker)





Now lay out the two Shaded Four Patch units and two of your 3-1/2" x 3-1/2" fabric squares (F) to make the top left-hand quarter of your quilt block (see image above).

Keeping your fabrics in order, sew the two rows together, finger press your seams towards the white squares then fix with your iron.

Finally join your rows together nesting your centre seams so your points meet, finger press your seam open then fix with your iron.

Now repeat using the same colours to make an identical, second quarter. Finally take the remaining fabrics and repeat the process for the final two quarters, substituting fabrics C and D for A and B.



Now lay out your four units to make the Spool and Bobbin Block. Make sure that everything is pointing in the right direction.



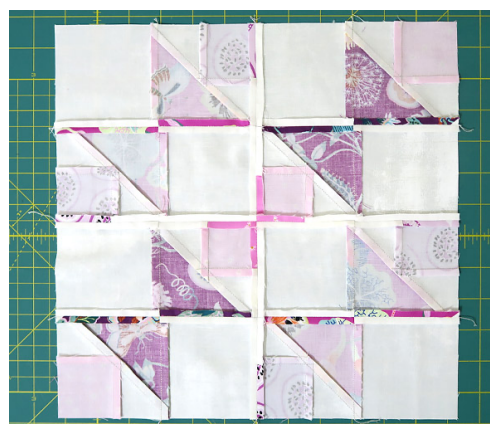
ECLECTIC MAKER



[www.eclecticmaker.co.uk](http://www.eclecticmaker.co.uk)

[facebook/eclecticmaker](https://facebook/eclecticmaker)

[@eclecticmaker](https://instagram/@eclecticmaker)



Keeping your fabrics in order, sew them together one row at a time. Take care to match your points. Finger press your seams open before fixing with an iron. Finally join your rows together matching your points as you go and again pressing your seams open.

If you have sewn your block together accurately it should measure 12-1/2" square but if you need to trim it make sure you leave 1/4" seam allowance on all your points.

Fab!... you have finished your Ninth block.



ECLECTIC MAKER



[www.eclecticmaker.co.uk](http://www.eclecticmaker.co.uk)

[facebook/eclecticmaker](https://facebook/eclecticmaker)

[@eclecticmaker](https://instagram/@eclecticmaker)