

michael miller FABRICS

CHINOISERIE BORDER Quilt

Size: 41" x 56" | Design by: Marinda Stewart | Level: Confident Beginner



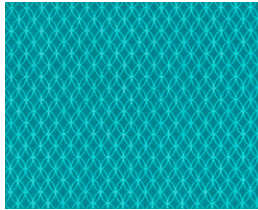
Free Pattern available on michaelmillerfabrics.com



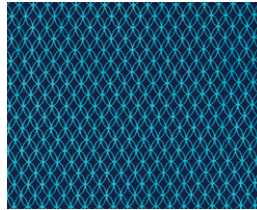
FABRIC REQUIREMENTS



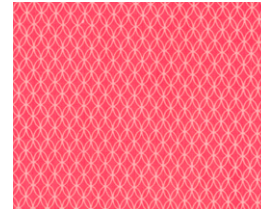
CX7295 Turq
23 3/4" (2 panels)



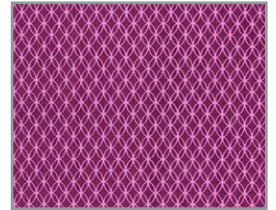
CX7296 Turq
3/4 yard



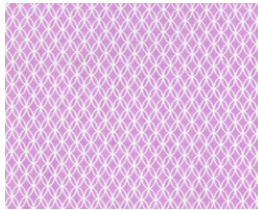
CX7296 Navy
1/2 yard



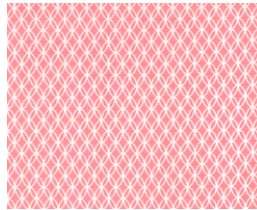
CX7296 Coral
1/4 yard



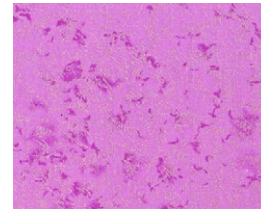
CX7296 Purple
3/8 yard



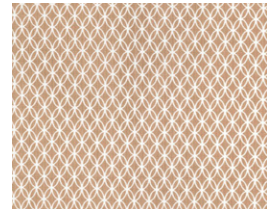
CX7296 Lavender
Fat 1/8



CX7296 Pink
Fat 1/8



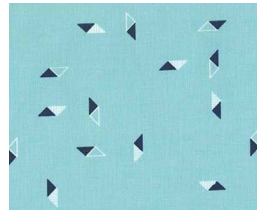
CM0376 Azalea
Fat 1/8



CX7296 Khaki
Fat 1/8



CX7446 Azure
Fat 1/8



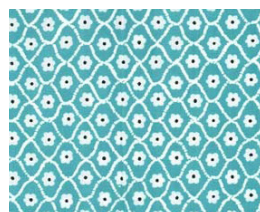
DC7554 Turq
Fat 1/8



DC7372 Aqua
Fat 1/4



WBP6774 Luna
1 3/4 yard



DC7370 Mermaid
1/4 yard

FABRIC REQUIREMENTS

SKU

CX7295
CX7296 TURQ
CX7296 NAVY
CX7296 CORAL
CX7296 PURPLE
CX7296 LAVENDER
CX7296 PINK
CM0376 AZALEA
CX7296 KHAKI
CX7446 AZURE
DC7554 TURQ
CX7372 AQUA
CX7370 MERMAID
WBP6774 LUNA

FOR (12)

(7) YARDS 33" - (1) BOLT
(9) YARDS - (1) BOLT
(6) YARDS - (1) BOLT
(3) YARDS - (1) BOLT
(4 1/2) YARDS - (1) BOLT
(1 1/2) YARDS - (1) BOLT
(1 1/2) YARDS - (1) BOLT
(1 1/2) YARDS - (1) BOLT
(1 1/2) YARDS - (1) BOLT
(1 1/2) YARDS - (1) BOLT
(1 1/2) YARDS - (1) BOLT
(1 1/2) YARDS - (1) BOLT
(3) YARDS - (1) BOLT
(3) YARDS - (1) BOLT
(10 1/2) YARDS - (1) BOLT

FOR (24)

(15) YARDS 30" - (2) BOLTS
(18) YARDS - (2) BOLTS
(12) YARDS - (1) BOLT
(6) YARDS - (1) BOLT
(9) YARDS - (1) BOLT
(3) YARDS - (1) BOLT
(3) YARDS - (1) BOLT
(3) YARDS - (1) BOLT
(3) YARDS - (1) BOLT
(3) YARDS - (1) BOLT
(3) YARDS - (1) BOLT
(3) YARDS - (1) BOLT
(6) YARDS - (1) BOLT
(3) YARDS - (1) BOLT
(2) YARDS - (1) BOLT

**WE DO OUR BEST TO MAKE SURE THESE ARE ACCURATE YARDAGES
BUT THESE ARE ESTIMATES UNTIL THE FINAL PATTERN IS COMPLETED AND EDITED. THANK YOU.**

Chinoiserie Border

Quilt designed by Marinda Stewart

Size: Approximately 41" x 56"

Skill Level: Confident Beginner

Fabrics	Yardage	Cutting
CX7245 Turquoise Chinoiserie Border	23 $\frac{3}{4}$ " (2 panels *)	(1) 10 $\frac{1}{2}$ " x 42 $\frac{1}{2}$ " – 1 panel (2) 5 $\frac{1}{2}$ " x 33 $\frac{1}{2}$ " – 1 panel
CX7296 Turquoise Lilliana	$\frac{3}{4}$ yard	(2) 4 $\frac{1}{2}$ " x 40 $\frac{1}{2}$ " (1) 4 $\frac{1}{2}$ " x 41 $\frac{1}{2}$ " (1) 2 $\frac{1}{2}$ " x 16 $\frac{1}{2}$ " (2) 12" x 13" (3) 1 $\frac{1}{2}$ " x 22"
CX7296 Navy Lilliana	$\frac{1}{2}$ yard	(5) 2 $\frac{1}{2}$ " x W.O.F. – binding (3) 1" x 22"
CX7296 Coral Lilliana	$\frac{1}{4}$ yard	(5) 1 $\frac{1}{4}$ " x W.O.F. (8) $\frac{1}{4}$ " x 3" – fan blocks
CX7296 Purple Lilliana	$\frac{3}{8}$ yard	(4) 1" x 34 $\frac{1}{2}$ " (4) 1" x 5 $\frac{1}{2}$ " (2) 1" x 40 $\frac{1}{2}$ " (2) 1" x 43 $\frac{1}{2}$ " (2) 1" x 10 $\frac{1}{2}$ " (1) 1" x 31 $\frac{1}{2}$ " (2) 1" x 8 $\frac{1}{2}$ " (2) 1" x 9 $\frac{1}{2}$ " (1) 1" x 15 $\frac{1}{2}$ "
CX7296 Lavender Lilliana	Fat 1/8 **	(3) 1 $\frac{1}{2}$ " x 22" (2) fan blocks ***
CX7296 Pink Lilliana	Fat 1/8 **	(3) 1 $\frac{1}{4}$ " x 22" (2) fan blocks ***
CM0376 Azalea Fairy Frost	Fat 1/8 **	(3) 1 $\frac{1}{2}$ " x 22" (4) fan blocks ***
CX7296 Khaki Lilliana	Fat 1/8 **	(3) 2" x 22"
CX7446 Aqua Jasmine	Fat 1/8 **	(3) 1" x 22"
DC7554 Turquoise Harmony	Fat 1/8 **	(3) 2" x 22"
DC7372 Aqua Flower Jam	Fat 1/4	(3) 1 $\frac{3}{4}$ " x 22" (3) 1 $\frac{1}{2}$ " x 22"
DC7370 Mermaid Flower Net	$\frac{1}{4}$ yard	(1) 3 $\frac{1}{2}$ " x 31 $\frac{1}{2}$ " (3) 1 $\frac{1}{2}$ " x 22"
WBP6774 Luna Vine Maze	1 $\frac{3}{4}$ yard	(1) 54" W x 63" H ****

Also Needed: 54" x 63" batting, scissors, straight pins, threads to match, rotary cutter, acrylic ruler,

mat, and fusible web.

* or amount needed for (2) complete panels

** a piece of fabric 9" x 22"

*** see pattern

**** fabric is 108" wide – (1) piece 54"x 63" will be leftover

Directions:

1. Sew (1) CX7296 Purple 1" x 10 1/2" piece to the top and bottom of CX7295 - 10 1/2" x 42 1/2" piece. Sew (1) CX7296 Purple 1" x 43 1/2" piece to each side. Set aside. Repeat using CX7296 Purple 1" x 5 1/2" piece for the top and bottom of the (2) remaining panels of CX7295. Sew CX7296 Purple 1" x 34 1/2" to each side of each panel. Set aside.
2. For the striped borders - sew together 22" lengths of the following fabrics in the following order: CX7296 Turquoise 1 1/2", CX7446 1", CX7296 Lavender 1 1/2", DC7554 2", CX7296 Pink 1 1/4", CX7372 1 3/4", CX7296 Navy 1", CM0376 1 1/2", DC7370 1 1/2", CX7296 Khaki 2", CX7372 1 1/2". Make (3) sets. Cross cut sets into 2 1/2" pieces. Sew end to end. Cut one 11 1/2" length. Sew to the top of the center panel. Cut (2) pieces 45 1/2" long. Sew one to each side of the panel. Set aside. Cut (2) pieces 6 1/2" long. Sew one to the top of each short panel. Cut (2) pieces 36 1/2" long. Sew one to the left side of the left panel. Sew one to the right side of the right panel.
3. Sew one CX7296 Purple 1" x 8 1/2" piece to the top of each short panel. Sew the left panel to the center panel aligning the bottom edges. Sew to within 1/4" of the top edge. Repeat for the right side.
4. Sew DC7370 3 1/2" x 31 1/2" piece to the bottom of the panels as shown.
5. Sew one CX7296 Purple 1" x 40 1/2" piece to each side of the panels.
6. Sew one CX7296 Purple 1" x 15 1/2" piece to the top of the center panel. Sew one CX7296 Purple 1" x 9 1/2" piece to each side of the top panel as shown. Sew to within 1/4" of the short panel intersection.
7. Sew CX7296 Turquoise 4 1/2" x 40 1/2" piece to each side of the quilt. Sew one CX7296 Turquoise 4 1/2" x 41 1/2" piece to the bottom of the quilt. Sew one CX7296 Turquoise 2 1/2" x 16 1/2" piece to the top of the outer panel. Set aside.
8. For the corner fan blocks - to make one fan blade - fold in half lengthwise, sew across the flat top edge. Trim corner and turn to the right side. One pointed fan blade made. Repeat for each blade - (2) CX7296 Pink, (2) CX7296 Lavender, and (4) CM0376 Fairy Frost. Sew together (4) blades, (2) CM0376 Fairy Frost, and (1) CX7296 Pink and Lavender. Make (2) fans. Set aside. For the fan stays, following manufacturer's directions, iron fusible web onto the wrong side of CX7296 Coral. Cut (4) 1/2" x 3" for each fan. Turn under remaining raw edges of the fan 1/4" and press. Place fan in lower corner of one CX7296 Turquoise 13" W x 12" H rectangle 1 1/2" in from each edge. Pin in place. Remove paper backing from fan stays. Place one in the center of each blade as shown. Criss cross the ends. Fuse in place. Hand or machine stitch fan and blades in place.

(NOTE: Fan was stitched with an open zig-zag and clear thread. Blades were machine satin stitched with matching thread using a very small satin stitch.) Repeat for the other block placing the fan in the lower left corner.

9. Sew left block from the top of the quilt to the inner corner. Pivot and sew the rest of the block from the corner to the outer edge. Repeat for the other side.
10. Layer backing, batting, and quilt top. Baste.
11. Piece CX7296 Coral 1 1/4" strips end to end. Fold in half lengthwise. Press. Aligning raw edges, pin to all four sides of the quilt.
12. Bind quilt using CX7296 Navy 2 1/2" strips pieced for length, leaving a small fold of CX7296 Coral exposed as shown.

Quilt Kit Information

	(12) Kits	(24) Kits
* CX7295 Turquoise	7 yards 33" (1 bolt)	15 yards 30" (2 bolts)
CX7296 Turquoise	9 yards (1 bolt)	18 yards (2 bolts)
CX7296 Navy	6 yards (1 bolt)	12 yards (1 bolt)
CX7296 Coral	3 yards (1 bolt)	6 yards (1 bolt)
CX7296 Purple	4 1/2 yards (1 bolt)	9 yards (1 bolt)
CX7296 Lavender	1 1/2 yards (1 bolt)	3 yards (1 bolt)
CX7296 Pink	1 1/2 yards (1 bolt)	3 yards (1 bolt)
CM0376 Azalea	1 1/2 yards (1 bolt)	3 yards (1 bolt)

CX7296 Khaki	1 1/2 yards (1 bolt)	3 yards (1 bolt)
CX7446 Azure	1 1/2 yards (1 bolt)	3 yards (1 bolt)
DC7554 Teal	1 1/2 yards (1 bolt)	3 yards (1 bolt)
CX7372 Aqua	3 yards (1 bolt)	6 yards (1 bolt)
DC7370 Mermaid	3 yards (1 bolt)	3 yards (1 bolt)
** WBP6774 Aqua	10 1/2 yards (1 bolt)	21 yards (2 bolts)
<p>* The repeat on this fabric is over 11 7/8" - 2 repeats equal 23 3/4". Cutting accuracy is essential to maintaining the motif pattern.</p> <p>** (2) Backings can be cut from each width</p>		